

# W

WESTERN LIVING // SEPT 2016

Discover the Stars  
of Our Design Scene

Ones to Watch:  
Who Will Be Next  
Year's Winners?

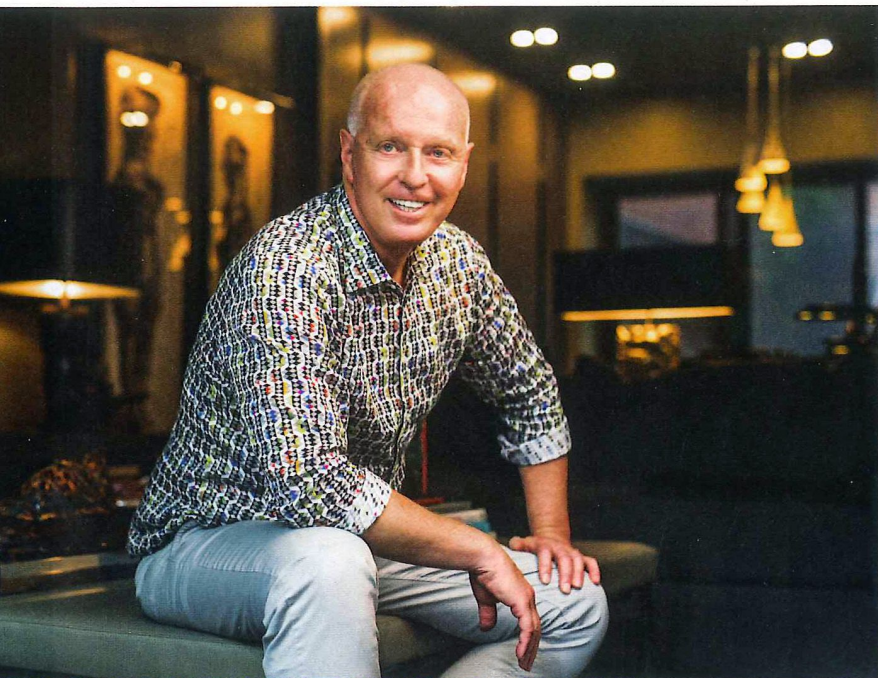
PLUS  
*New Category!*  
Maker of the Year



# Designers of the Year

*Our 9th Annual Celebration of the Very Best in Design and Architecture*





INTERIORS

## The Mainstay

Douglas Cridland may have been defining the Calgary design scene for four decades, but he maintains a secure spot on the cutting edge.

BY JACQUIE MOORE // PORTRAIT BY NATHAN ELSON

» To most visitors, the phrase “southwest corner of Alberta” will likely generate a few standard word associations—with wind turbines and cattle usually mentioned first and second, respectively. “Beauty,” “elegance” and “Douglas Cridland” aren’t likely to make the top 20. Yet the geography around Pincher Creek, where our Interior Designer of the Year was born, provides enduring inspiration for his now-iconic palette.

Cridland tried his damndest to leave Alberta. He went to school in Utah (three semesters at BYU, one at Weber State) but wound up back in Calgary. Over the years he applied for, and was offered, design gigs in Toronto, Ottawa, Victoria and elsewhere, but “something about the Prairies always held me here,” he says.

Nearly four decades into a robust interior-design career in Calgary, Cridland describes that “something” as—on an emotional level—“an energy, a particular beauty” and “an open, non-judgmental” vibe he hasn’t felt anywhere else. Professionally speaking, it’s about the vastness, the light on the Prairies: qualities that have informed his



### Artful Composition

Cridland’s own downtown Calgary condo is the perfect example of his work: moody and masculine, but with plenty of warmth and luxury. It’s a space thoughtfully designed to showcase his extensive art collection—not overly flashy, but still a showstopper.



*"Wherever I go," says Interior Designer of the Year Douglas Cridland, "I'm always considering the question, 'why is something successful?' not 'why is it of the moment?'"*







signature rich, earthy tones and infinite depth of detail.

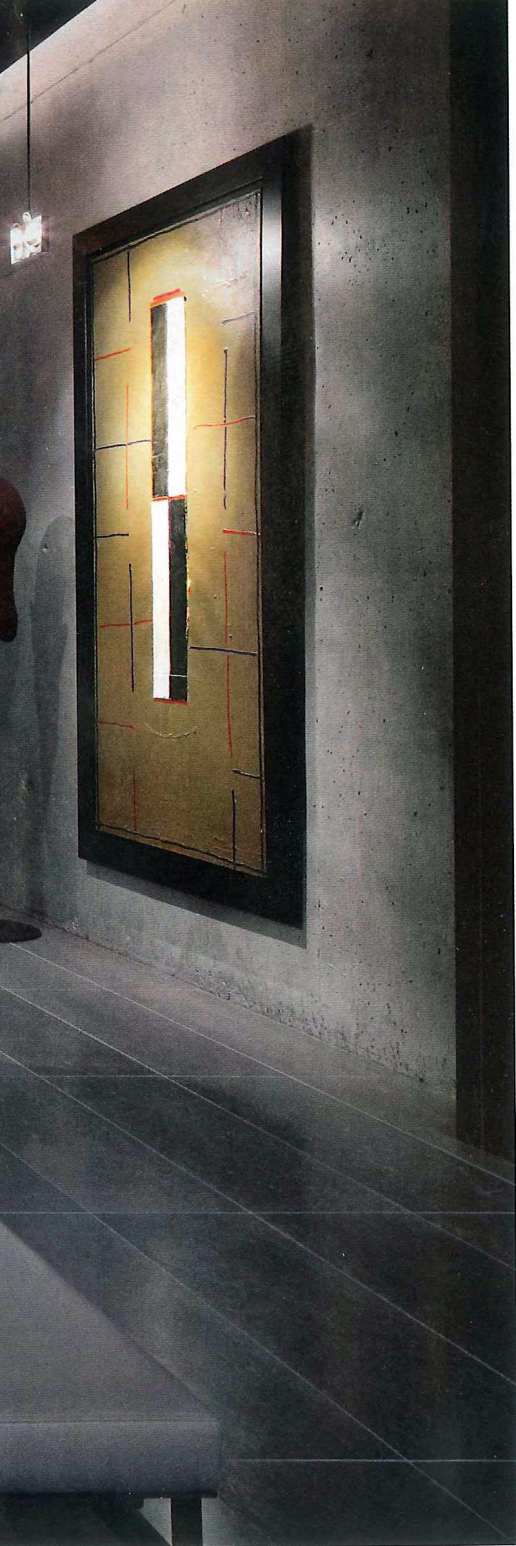
Between 1979 and 2014, Cridland developed his inimitable style by eschewing trends and, instead, masterfully and unpredictably blending his clients' artwork and sentimental furniture with elements from other eras, from contemporary to mid-century modern (a period for which Cridland professes a hugely comfortable attachment—"Those are my roots," he says) to traditional. Invariably, underneath all his signature layers are strong, classic lines.

Judge and interior designer Paul Lavoie gave Cridland high marks for the timeless elegance of his work. "His style is enduring and

classic—it's lush, full and deep in detail," says Lavoie, a long-time admirer. "Doug should win 'Designer of the Decade' for his entire body of work." California designer and judge Kelly Wearstler was likewise impressed by the consistent excellence of Cridland's portfolio: "The execution is impeccable."

Cridland is self-deprecating about the win and his longevity. "I guess my run has been good," he says when pressed. "Maybe it's because I give people a classic look that has legs to it." Thinking further, he adds: "Wherever I go, I'm always considering the question, 'why is something successful?' not 'why is it of the moment?'"





#### Smart Solutions

A concrete wall in the living room (above) posed electrical challenges, but Cridland came up with a clever workaround: ceiling-mounted art lights and LED cove lighting, which provide a gallery-like feel. In the kitchen, the designer ditched the hood fan in favour of an existing air return vent in the ceiling (top right).