

CANADIAN

OCTOBER 2006

340 Pages!  
Record-Breaking Issue

# HOUSE & HOME

CANADA'S MAGAZINE OF HOME & STYLE

## Cosy Up

**GORGEOUS  
FALL DECORATING**

**9 INCREDIBLE HOUSES**

**THE  
ULTIMATE  
KITCHEN**

**+25** pages of hot looks  
and new products

**FIVE-INGREDIENT GOURMET MEALS**

Display Until Oct. 24 \$5.95



www.canadianhouseandhome.com

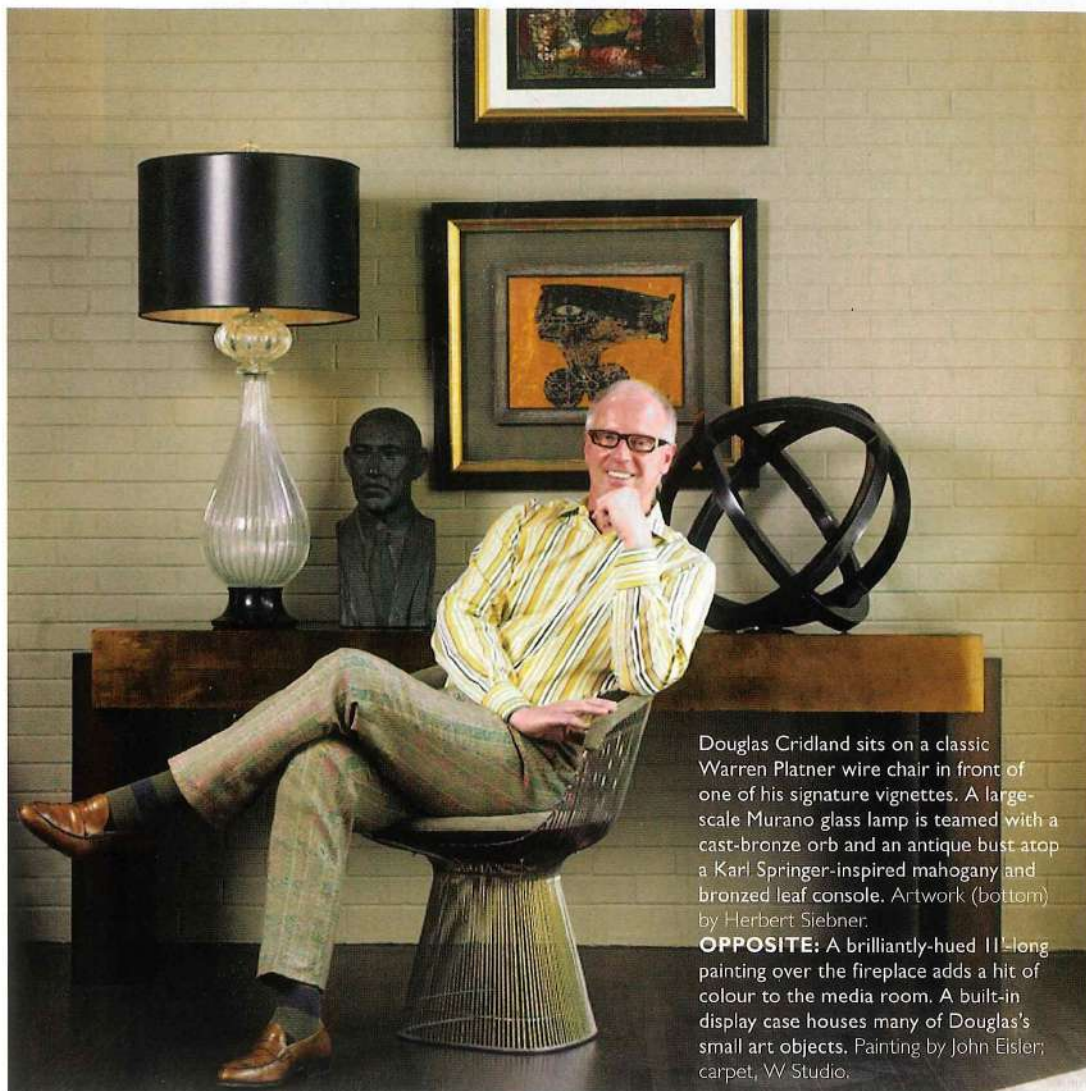


DESIGN

# Against the Grain







Douglas Cridland sits on a classic Warren Platner wire chair in front of one of his signature vignettes. A large-scale Murano glass lamp is teamed with a cast-bronze orb and an antique bust atop a Karl Springer-inspired mahogany and bronzed leaf console. Artwork (bottom) by Herbert Siebner.

**OPPOSITE:** A brilliantly-hued 11'-long painting over the fireplace adds a hit of colour to the media room. A built-in display case houses many of Douglas's small art objects. Painting by John Eisler; carpet, W Studio.

## CALGARY DESIGNER DOUGLAS CRIDLAND REWORKS A MID-CENTURY HOUSE WITH GRAPHIC MATERIALS AND BOLD ARTWORK.

*Text by Kelvin Browne*

*Photography by Robert Lemermeyer*

## "I love classicism,

both contemporary and traditional," says Calgary-based interior designer Douglas Cridland. But he offers a caveat: "I don't mean a house that's all chrome and glass, but rather one that has the good proportions and purity of design associated with the best of mid-century modern style."

Douglas also relishes the process of renovating — taking someone else's design to the next level — and his own houses have appeared in *House & Home* many times. Each project demonstrates the modern sensibility he brings to practically any location, be it a high-rise condominium or a new house built from scratch. With his latest home in an upscale Calgary neighbourhood, the renovation, which took just over a year to complete, is so finely tuned you assume very little has been changed even though everything has been updated.





**ABOVE:** Leading to the new second-storey exercise room and office, the stainless steel staircase wrapped in black granite is flooded with light. Sculpture by Ben McLeod.

**LEFT:** The original walnut coffered ceiling in the media room was retained, as were the arched windows, which open onto a courtyard. The olivewood wall housing the TV slides left to completely enclose the den-like room for intimate gatherings.

**BELOW:** Douglas stained the sunken living room's original oak floor ebony-espresso to contrast the olivewood panelling and pewter grey-green-painted brick walls. Two classic, antique Biedermeier chairs are paired with a Biedermeier-style reproduction with a tortoiseshell finish. Sculpture by Ben McLeod.



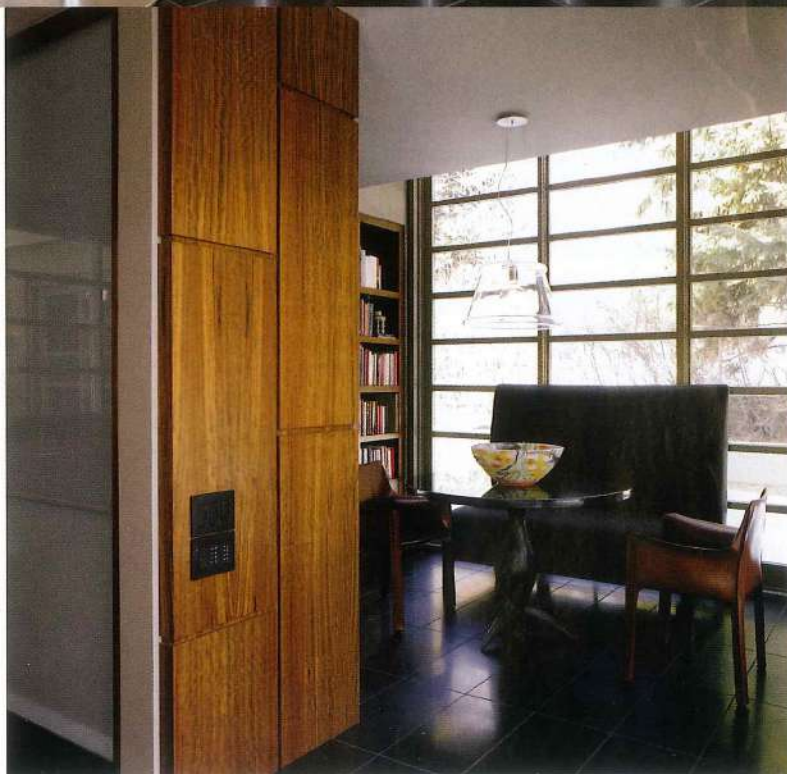




The kitchen's chrome, lacquer and wood cabinetry remains faithful to the 1960s tone of the house, but is brought up to date with contemporary leather stools, pendant lighting and opaque glass sliding doors that conceal shelving. **BELOW:** In the sitting room off the kitchen, two Russian red leather chairs, a high-back bench and a pedestal table offer cosy dining. The intimate nature of the room is enhanced by built-in bookcases. A wall of windows extends up to the second-storey exercise room. Bowl by Don Kottman.

Douglas and his partner, Dan Wright, purchased the 6,000-square-foot-plus house four years ago. Having admired it since childhood, he had mentally bought the house after taking two steps in. "This house has always been interesting and different; an architect-designed house when not many were," says Douglas, noting that he and Dan always look for houses with good architectural bones.

Built by an American from Texas during the 1960s, when a large contingent of Americans populated Western Canada, the house's design adopted an American South sensibility, with unusual dimensions and proportions. The house also boasts several clerestory windows — a wonderful feature of modern homes from the period — which flood the house with light and animate the spaces. "I think its boldness gives it a real Western Canadian feel," Douglas adds. "It's an intriguing house with basically no windows to the street," he says. "Most of its rooms open onto inner courtyards, rather than to outer lawns or gardens, which makes the house very private."







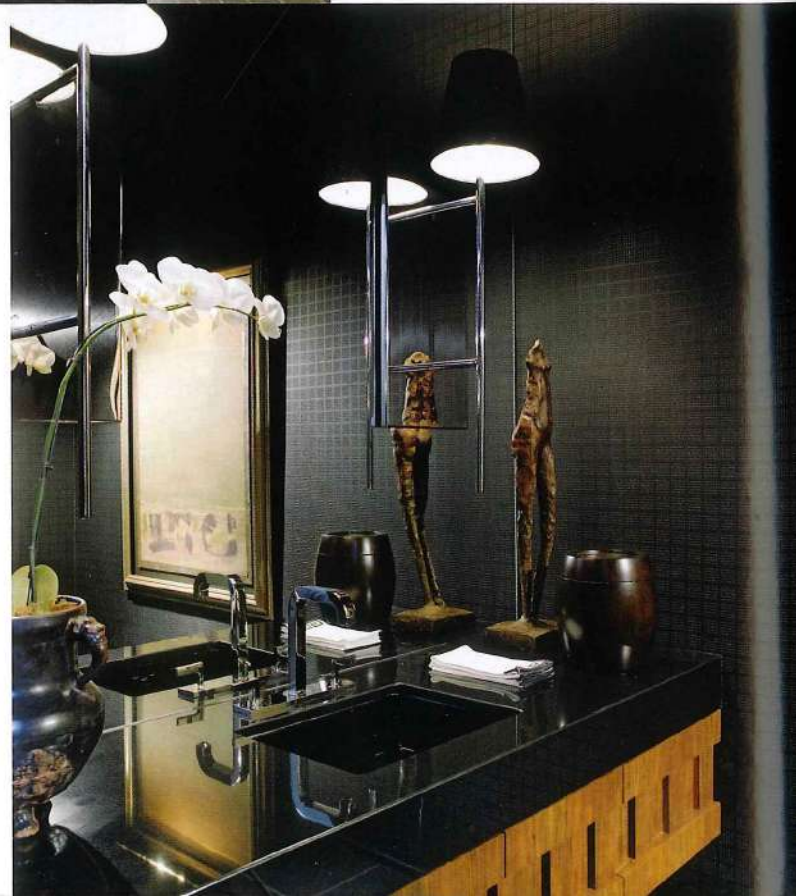
**ABOVE:** Fleamarket-find busts and a tribal mask are showcased with dramatic uplighting in the media room's built-in shelving unit.

**LEFT:** The foyer is highlighted with a mid-century style chandelier and a pair of Ron Moppett abstract drawings. A large-scale painting draws the eye to the end of the hall. In classic 1960s fashion, the walls are painted brick, the sconces are classic light boxes finished in pewter, and narrow clerestory windows let light into the space. Painting by Douglas Haynes.

**BELOW:** Embossed wallpaper and a vanity with a chunky polished-granite counter and notched olivewood drawers imbue the powder room with a rich, masculine feel. Sculpture by Clint Roenisch; painting by Ron Spickett.

The unassuming façade was not carried to the interior, where brightly painted walls, loud oversized floral wallpaper and a “wacky 1960s style” created an over-the-top visual feast. Not an auspicious start, but then Douglas had a vision for the new house. “I wanted to put a contemporary spin on a good piece of mid-century modern architecture and take it to that next level,” says Douglas. “I wanted to update it, but in a way that emphasized its essentially glamorous character.”

Working with Calgary architect Richard Lindseth (a longtime collaborator), Douglas added a second floor above the kitchen and living room for an exercise room and an office. (An original second floor occupied the opposite end of the house above the garage and storage rooms, where the master and guest bedrooms lie. The exercise room and office are now connected to the bedrooms via a rooftop patio.) All windows were replaced with sleekly horizontal, very modern bands of glazing. Taking care to respect the integrity of the original design, Douglas was so







A wall-width recessed upholstered needleweave headboard serves as a luxurious focal point in the master bedroom. Classic Art Deco lamps and formal burled olivewood bedside tables mix traditional and modern elements.

Painting by Christian Eckhart.

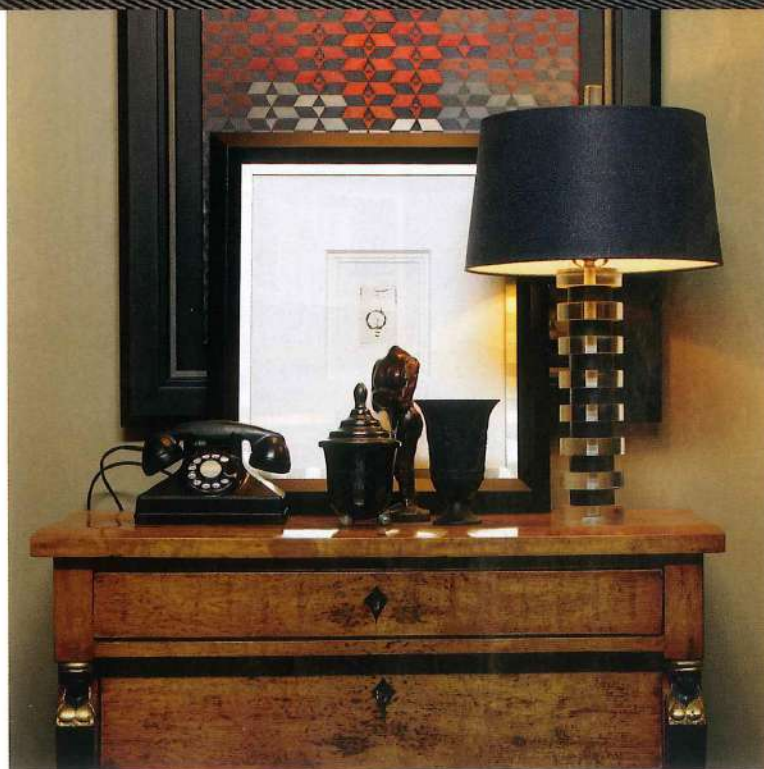
**BELOW:** Exemplifying Douglas's fondness for mixing styles and eras, a 1960s classic Lucite lamp, vintage telephone, Paris flea market jar and Wedgwood chalice sit atop a Biedermeier chest. Painting by Maxwell Bates; torso sculpture by Clint Roenisch.

successful in blurring the lines between old and new that visitors are hard-pressed to determine which elements are original and which were added. "We gutted it, opened up three rooms to create the current kitchen, and relocated and reconfigured the bathrooms," he says.

Despite all the changes, the house's plan remains intact and its strong, bold feeling has been enhanced with olivewood wall panelling and honed black granite floors throughout most of the main level. The use of relatively few materials, and a subdued palette of pewter grey-green and black, give the house a sense of calm and elegantly knit the rooms together.

This smooth transition suggests that the house was originally designed for entertaining, something Douglas and Dan always look for in a space. "Parties for 120 to 150 easily fit here," says Douglas. Each room opens into the next, and each courtyard can be accessed from multiple rooms, making for easy traffic flow throughout the house. Douglas also notes a feature

CONTINUED ON PAGE 282





(416) 203-1501 or visit [www.eurolite.com](http://www.eurolite.com); potted succulents, Wild Thyme, Toronto (416) 440-2614 or visit [www.wildthyme.ca](http://www.wildthyme.ca); placemats, napkins, Fluid Living, Toronto (416) 850-4266 or visit [www.fluidliving.com](http://www.fluidliving.com); loveseat, Sears, call 1-888-473-2772 or visit [www.sears.ca](http://www.sears.ca) for locations across Canada. **Page 207: Swimming pool:** Pool installation, Clear Choice Pools and Spas, Collingwood, Ont. (705) 446-9931. **Kitchen:** Bar stools, Ikea, as above; kitchen faucet, Grohe, call (905) 271-2929 or visit [www.groheamerica.com](http://www.groheamerica.com) for retailers across Canada; kitchen sink, Franke, call 1-877-6FRANKE or visit [www.frankecanada.com](http://www.frankecanada.com) for showrooms across Canada. **Page 208: Bathroom:** Soap pump, Fluid Living, as above; floral arrangement, Wild Thyme, as above; vanity sinks, Kohler, call 1-800-4KOHLER or visit [www.ca.kohler.com](http://www.ca.kohler.com) for retailers across Canada; faucets, Taps Bath Centre, Toronto (416) 785-0224, 1-800-263-2976 or visit [www.tapsbath.com](http://www.tapsbath.com). **Page 209: Master bedroom:** Bed, Ikea, as above; brown coverlet, Reville, call 1-866-738-3553 or visit [www.reville.ca](http://www.reville.ca) for retailers across Canada.

## Against the Grain

Pages 210 to 215

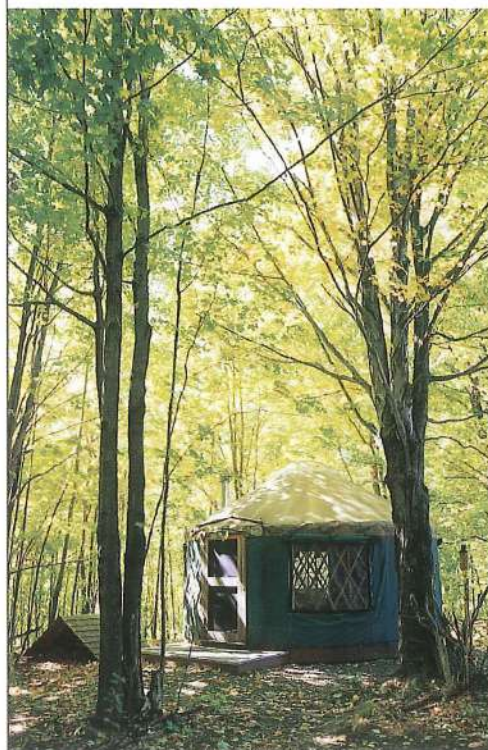
Design, Douglas Cridland, Douglas Cridland Interior Design, Calgary (403) 228-0636; architecture, Richard Lindseth, Richard Lindseth Architecture, Calgary (403) 245-2282 or visit [www.lindseth.com](http://www.lindseth.com); contractor, Triangle Enterprises, Calgary (403) 289-3693 or e-mail [triangle@telusplanet.net](mailto:triangle@telusplanet.net); olivewood, Bacon Veneer Company, Calgary (403) 250-3757, 1-800-950-9663 or visit [www.baconveneer.com](http://www.baconveneer.com); millwork, Northmount Industries, Calgary (403) 243-0200; honed granite, Stone Tile International, call 1-866-669-1103 or visit [www.stone-tile.com](http://www.stone-tile.com) for locations across Canada; windows, Calgary Sash & Door Limited, (403) 277-0771 or visit [www.calgarysashanddoor.com](http://www.calgarysashanddoor.com). **Page 210: Media room:** Chenille sofa and armchairs, leather cocktail ottoman, Douglas Cridland Interior Design, as above; chenille upholstery fabric, Têlio (to the trade), Toronto 1-877-254-9855, Montreal 1-888-855-6977 or visit [www.telio.com](http://www.telio.com); area rug, W Studio, Toronto (416) 929-9290, 1-888-228-2467 or visit [www.wstudio.ca](http://www.wstudio.ca). **Page 212: Living room:** Sofa, coffee table, Douglas Cridland Interior Design, as above; Biedermeier-style chair, William Switzer & Associates (to the trade), Vancouver (604) 255-5911 or visit [www.williamswitzercollection.com](http://www.williamswitzercollection.com). **Page 213: Kitchen:** Downsview kitchen system, Empire Kitchen and Bath, Calgary (403) 252-2458 or visit [www.empirekitchenandbath.com](http://www.empirekitchenandbath.com); Lem stools, Inform Interiors, Vancouver (604) 682-3868 or visit [www.informinteriors.com](http://www.informinteriors.com). **Morning room:** Russian red-leather Cab chairs, Italinteriors, Vancouver (604) 685-0037, Toronto (416) 366-9540 or visit [www.italinteriors.com](http://www.italinteriors.com); bench, Douglas Cridland Interior Design, as above. **Page 214: Powder room:** Sconces, Douglas

Cridland Interior Design, as above; embossed wallpaper, Metro Wallcoverings (to the trade), Calgary (403) 245-9191, 1-800-440-0911 or visit [www.metrowallcoverings.com](http://www.metrowallcoverings.com) for dealers across Canada; granite counter, Alberta Marble & Tile, Calgary (403) 287-0944. **Page 215: Master bedroom:** Striped bedding, Kate Spade, call 1-866-999-5283 or visit [www.katespade.com](http://www.katespade.com); bedside tables, William Switzer & Associates (to the trade), as above; grey upholstered benches, Douglas Cridland Interior Design, as above; custom carpet, Colin Campbell (to the trade), Calgary (403) 245-9222 or visit [www.studio-line.ca](http://www.studio-line.ca).

## Mountain Time

Pages 216 to 221

**Page 216: Living room fireplace:** Fireplace construction, coffee table, spear stand, Gerry Scheck, Blue Lantern Welding & Supply, Delhi, N.Y. (607) 746-3604; sofa, chairs, Crate & Barrel, call 1-800-967-6696 or visit [www.crateandbarrel.com](http://www.crateandbarrel.com) for information. **Page 218: Exterior:** Builder, Oak Tree Homes, Unadilla, N.Y. (607) 988-7830, 1-800-640-2483 or visit [www.oaktreehomes.com](http://www.oaktreehomes.com). **Page 220: Master bedroom:** Bed, Pompanoosuc Mills, New York (212) 226-5960 or visit [www.pompy.com](http://www.pompy.com); bedding, Aero, New York (212) 966-1500 or visit [www.aerostudios.com](http://www.aerostudios.com); paintings (above bench), Dennis McLeod, Traywick Contemporary, Berkeley, Calif. (510) 527-1214 or visit [www.traywick.com](http://www.traywick.com); metal bench, **CONTINUED**



RBC ATM withdrawal	\$0.00
RBC ATM withdrawal	\$0.00
Cheque #356	\$0.00
Retail purchase	\$0.00
Retail purchase	\$0.00
Online Cable bill payment	\$0.00
Grocery purchase	\$0.00
RBC ATM withdrawal	\$0.00
Student loan payment	\$0.00
Cheque #357	\$0.00
Retail purchase	\$0.00
Retail purchase	\$0.00
RBC ATM withdrawal	\$0.00
Restaurant	\$0.00
Cheque #358	\$0.00
Retail purchase	\$0.00
RBC ATM withdrawal	\$0.00
Cheque #359	\$0.00
RBC ATM withdrawal	\$0.00
Retail purchase	\$0.00
Retail purchase	\$0.00
RBC ATM withdrawal	\$0.00
Grocery purchase	\$0.00
RBC ATM withdrawal	\$0.00