

# avenue

## MAVERICKS

Inside the Glenbow's  
new exhibit

## LABELLING OUR KIDS

Debating  
Alberta Education's  
learning codes

## CULTURE CLASH

Skiers vs.  
snowmobilers

## SAFE IN THE CITY

Is crime really on the rise?

# 100 THINGS WE LOVE ABOUT CALGARY

MARCUS  
NILSON

The Flames' right winger  
shows his off-ice style



Return Undeliverable  
Canadian Addresses to:  
REDPOINT MEDIA GROUP INC.  
105, 1210 20 Ave. S.E., Calgary,  
Alberta, T2G 1M8



HOMES // DESIGNER PICK

BY AMANDA GRAVES

PHOTOGRAPHY BY BRUCE EDWARD

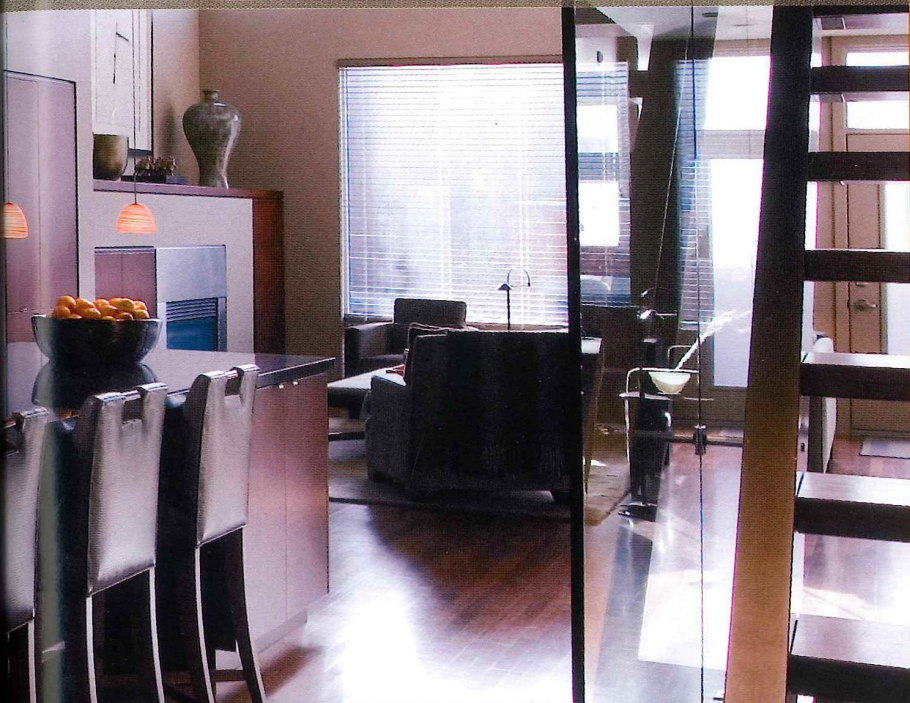
STYLED BY SUSAN EYRE

# MISSION






# POSSIBLE



ARCHITECT JEREMY STURGESS HAS SELECTED THIS MISSION TOWNHOME PROJECT AS ONE OF HIS FAVOURITES. DESIGNED FOR A COUPLE EMBARKING ON A NEW PHASE IN THEIR LIVES, THE CONTEMPORARY SIGNATURE GELS WITH THE HISTORIC INNER-CITY STREETScape >>



"THE KITCHEN IS FLEXIBLE WHETHER IT'S A SMALL INTIMATE DINNER PARTY OR A LARGE FAMILY GATHERING."  
— HOMEOWNER

The clean edges of a glass wall and dark granite countertops in the kitchen are softened by the warm wall colours and rich cherrywood floors that run throughout the open main floor space.

Interior designer Douglas Cridland applied some of his signature touches while working within the existing space.





**Right:** Comfortable furniture and an oversized upholstered ottoman help make the room an inviting place to sit and relax.

**Below, left:** A neutral "greige" wall colour lets the owners display and appreciate their collection of art without distraction.

**Below, right:** In the second floor bath, the vanity backsplash is constructed of mirror to once again carry light throughout the room.

**"THE INTERIOR PLAN WAS DESIGNED TO MAXIMIZE SPACE AND FLEXIBILITY OF USE." — JEREMY STURGESS, ARCHITECT**



**IN A NEIGHBOURHOOD** known for its historic buildings and Victorian houses, the clean, contemporary lines and modern details of one of the area's latest townhouse projects are a refreshing change.

Architect Jeremy

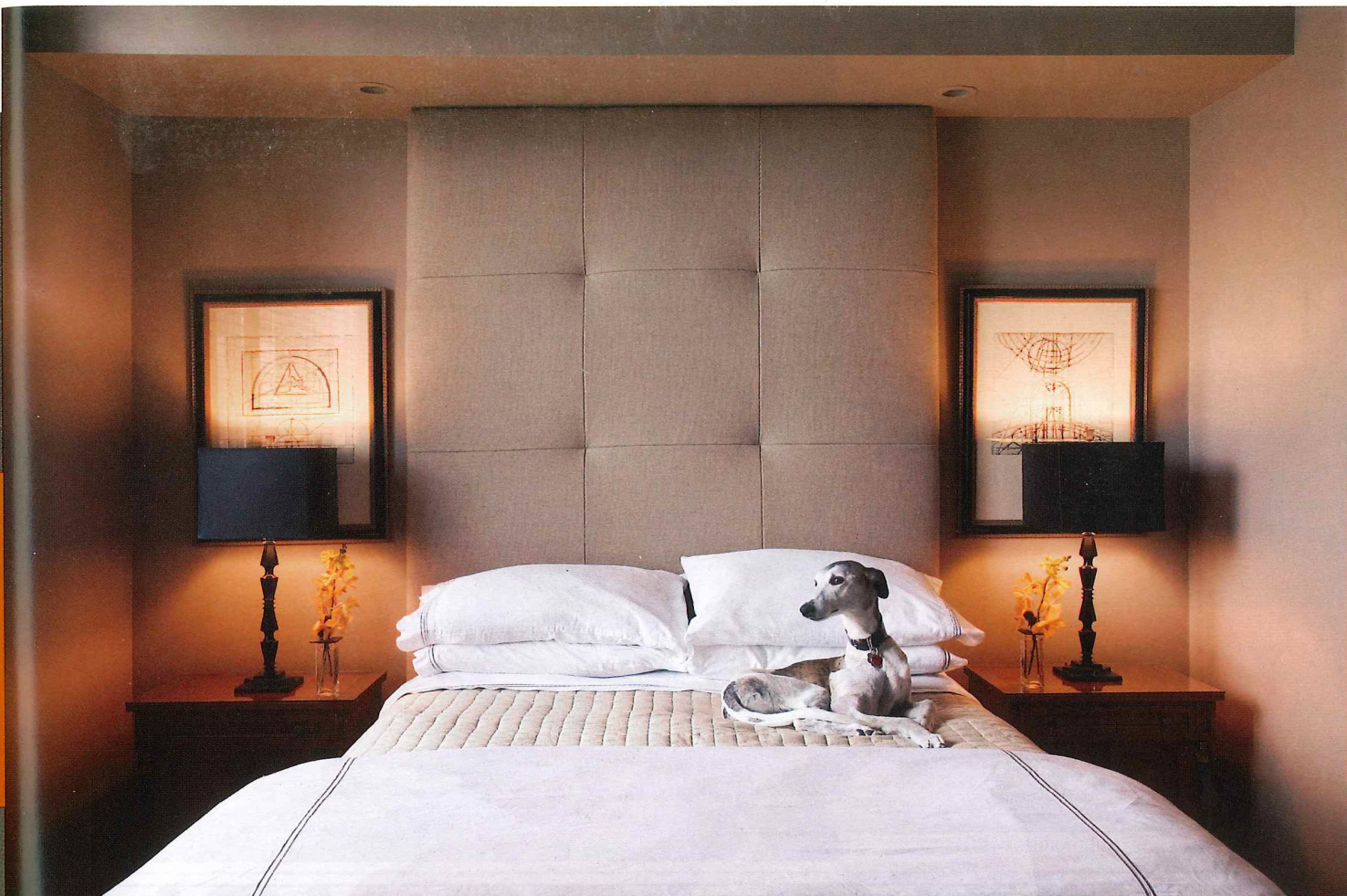
Sturgess worked closely with the community to create this development located in the historic Mission area in inner-city Calgary. Even with its angular, modern esthetic, the look of these townhouses flows well with the early 20th century row of houses that line most of the block.

Sturgess designed the five townhomes "as a series of brick 'towers' which distinguish the development by tying into the historic brick character of the neighbourhood," he says. "The buildings are three storeys, however the third floor is recessed from the building face to act as a 'penthouse' and reduce the impact of the building's height on the street."

While the five homes are uniform from the outside, they contain a host of different personalities within. For the couple who bought what was originally the show suite, all the design elements they wanted for an easy, streamlined lifestyle were already present.

"It was a great transitional space for us," says the owner.

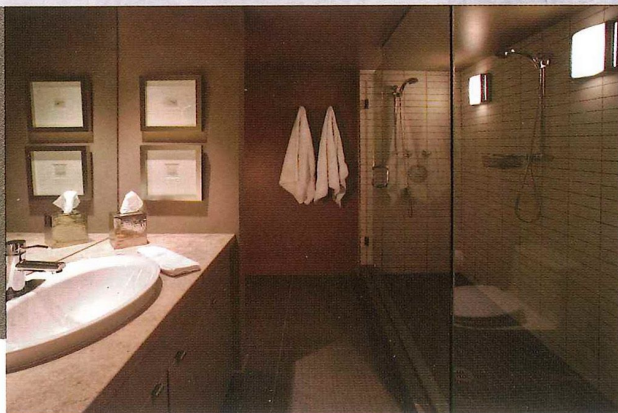




**Above:** The large ultra-suede headboard designed by Douglas Cridland takes centre stage in the master bedroom.

**Near right:** Elements chosen for the personal space — from paint colour to lighting — create a serene spa-like atmosphere in the basement bathroom.

**Far right:** The loft-like office on the second floor opens to the living room below.



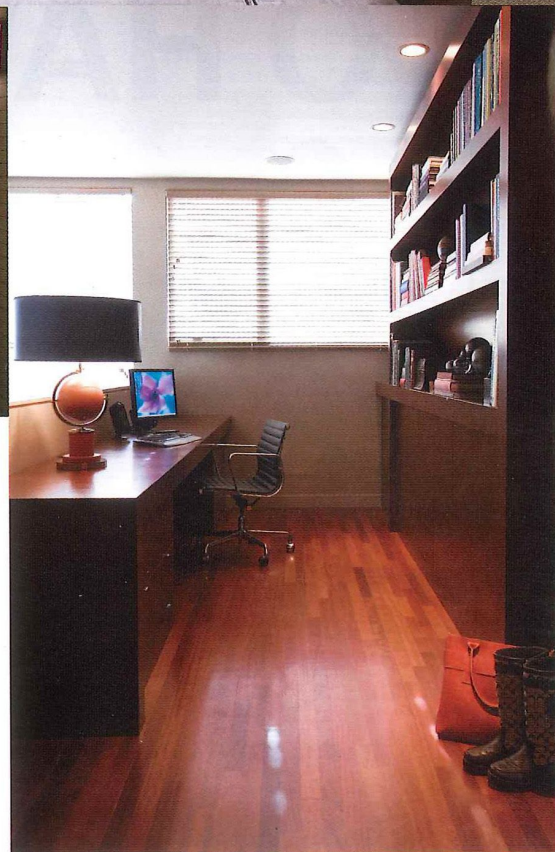
"It's a more adult-oriented space than what we had before."

It helped that the couple already had a relationship with Sturgess, who had built two houses for them previously.

The homeowners, who are actually in the process of building another home nearby, were looking for somewhere to live in the interim. Before they moved in, they consulted longtime friend and interior designer Douglas Cridland on the design of the interior spaces of the home. Cridland had some of the furniture custom-made to match the existing kitchen and built-ins. "We worked with the lines of what was already here because the space was well-considered," says the homeowner.

Upon entering the house, one is immediately struck by the view across the room: a two-storey wall of windows covering the south side of the house, bringing Alberta's bright winter sunlight into the centre of the home.

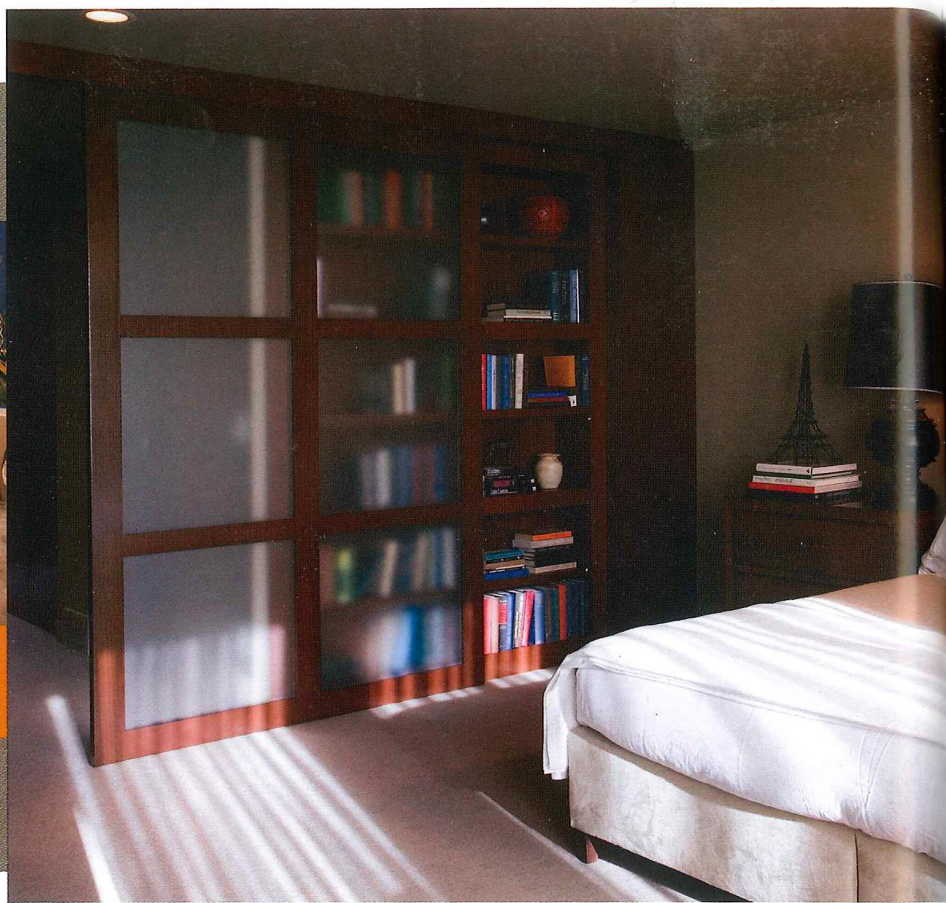
The homeowners kept the design of the kitchen, including the rich reddish-brown cherry cabinets and the cherrywood floors that run throughout the entire open main floor space. The Sub Zero fridge and Miele dishwasher are also faced with cherrywood to blend seamlessly with the cabinetry. A substantial 13-foot-long island topped with honed black granite anchors >>







The efficient and luxurious design appealed to the owners, who were looking for a more "adult-oriented" space.



# TO HAVE + TO HOLD



In our store today, in your home tomorrow.

**Gift Registry Available**

**SOHO+NADA**

820 11 Avenue SW Calgary  
Telephone 403 261 0888